

Lesson 3

Plants and Animals Need Each Other

Look and Wonder

Animals and plants need each other to survive. How do these plants and animals help each other?



Explore

Inquiry Activity

Why do plants and animals live together?

What to Do

- 1 Observe.** Look closely at a plant near your school.
- 2 Classify.** What animals can you find near, in, or on the plant?
- 3 Record Data.** Draw a picture of what you observed.

Explore More

- 4 Communicate.** How is the plant helping the animals survive?



1 IE 4.b. Record observations and data with pictures, numbers, or written statements.

You need



paper



crayons

Step 1



Read Together and Learn

Vocabulary

pollen

How do plants and animals help each other?

Plants help animals live.
Animals use plants for shelter
and food.



◀ This field mouse eats berries from a plant.



▲ These skunks use a plant as their home.

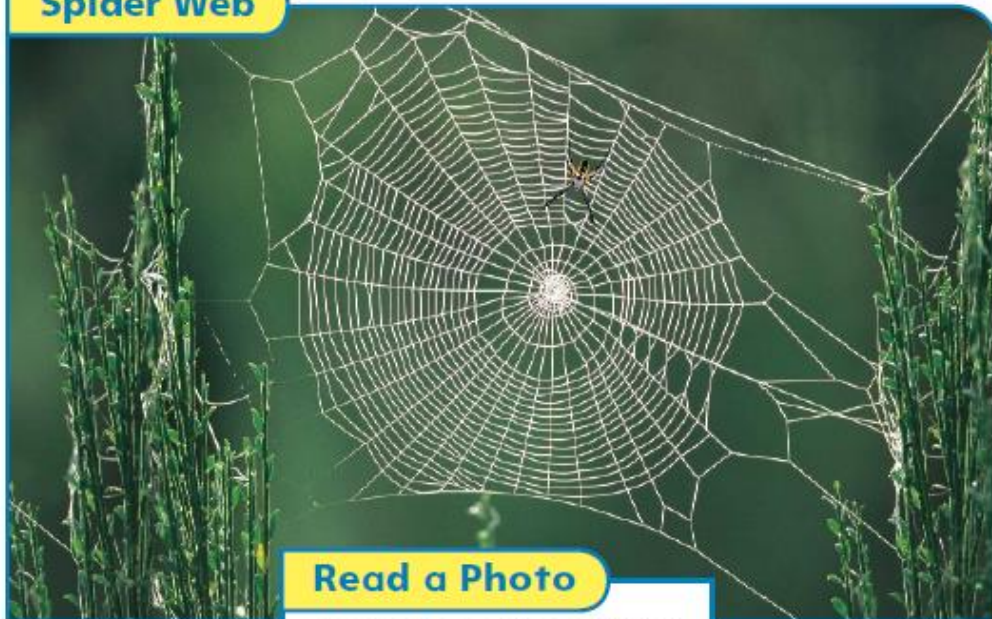
Animals help plants live, too. Bees help plants make new plants. Bees carry pollen from flower to flower. **Pollen** is powder inside a flower that makes seeds.



✓ How do plants and animals need each other?

▲ Pollen sticks to the bee's legs.

Spider Web



Read a Photo

How does the spider use the plants?

Why do some animals need other animals?

Animals need each other to survive. Sometimes animals can be helpful to one another. Insects that live on a zebra can be harmful. But a bird can eat the insects. Birds can also warn a zebra of danger.

▼ This bird eats insects that might live on the zebra.



▼ Fleas are harmful to dogs.

Other times, one animal is helped and the other animal is harmed. When a flea lives on a dog, it feeds off the dog and can make the dog sick.

- ✓ Why do animals need other animals?



Think, Talk, and Write

1. **Classify and Categorize.** What are some animals that need other animals to live?
2. Write about how an animal uses plants to live.

Health Link

Draw and write about how plants help you stay healthy.